

PRODUCT PROSPECTUS

# Practice Essentials



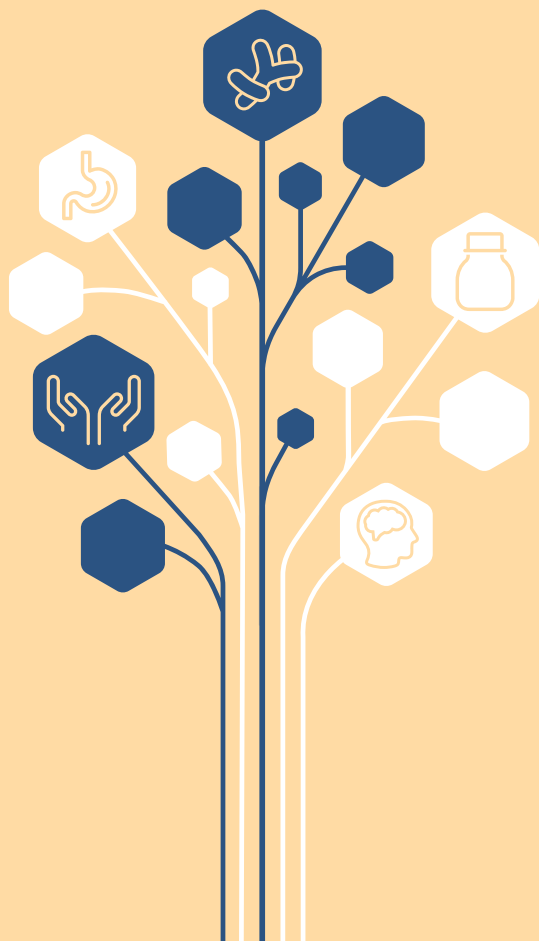
## PRACTICE ESSENTIALS

# Table of Contents

<b>The Klair Labs® Story</b>	3
<b>Section 1: Probiotics</b>	
Ther-Biotic® Complete	4
Ther-Biotic® Complete Powder	4
<b>Section 2: Digestive Enzymes</b>	
Vital-Zymes Complete	5
Vital-Zymes Chewable	5
<b>Section 3: Magnesium</b>	
Magnesium Glycinate Complex	6
<b>Section 4: Omega-3 Fatty Acids</b>	
Eicosamax® 1000	7
Eicosamax® TG Liquid	8
Eicosamax® TG	9
<b>Section 5: Curcumin</b>	
Curcuthera™	10
<b>Section 6: Vitamin D</b>	
Vitamin D <sub>3</sub> (5,000 IU)	11
Vitamin D Plus K	11
<b>Section 7: Multivitamins</b>	
MultiThera® 1 Capsule Formula	12
VitaPrime® Capsule Formula	13
VitaSpectrum® Powder – Tropical Flavor	14
<b>How to Purchase</b>	15

PURITY | POTENCY | PERFORMANCE

**Caution:** If you are pregnant, nursing, have a medical condition, or taking prescription drugs, consult your healthcare professional before using this product. Keep out of reach of children.



# The Klaire Labs® Story



**According to all who knew her, Claire Farr was a tireless crusader, genuine humanitarian, and dynamic entrepreneur with a “commitment to excellence for the nutritionally aware.”**

In 1969, driven by a personal struggle with severe food allergies and environmental sensitivities, Claire Farr set out on a mission to formulate and manufacture the highest quality, hypoallergenic nutritional supplements possible. As many dedicated entrepreneurs do, Claire set up shop in her own home in Carlsbad, California, and Klaire Labs was born.

In her quest to develop a line of nutraceuticals that sensitive individuals could reliably tolerate, Claire initially focused on single-ingredient formulations. Unlike most nutritional supplement manufacturers at the time, Claire purchased only pharmaceutical-grade raw ingredients selected specifically for maximum purity and bioavailability. She avoided the use of fillers and synthetic ingredients, while focusing on natural and synergistic constituents. The medical community began to take notice.

By this time, demand was growing for environmental, nutrition-focused, and integrative medical practitioners. As such, Claire and her unique products gained the attention and respect of a number of prestigious complementary medicine proponents. Word of Claire's consistently reliable outcomes spread, allowing her home-based start-up to grow into a new manufacturing facility and expanding her capabilities to include bottling and custom formulations. It was not until 1983 that Claire introduced her first probiotic, a product category that ultimately became her most successful. Klaire Labs' Ther-Biotic® formulations remain a leading professional brand to this day.

In 2004, Klaire Labs was sold to ProThera®, Inc. ProThera, Inc. was in turn acquired by Soho Flordis International (SFI®) in 2013. SFI's philosophy to empower healthcare providers with better, natural options aligned quite naturally with that of Claire Farr. Having dedicated their lives' work to similar goals, the SFI founders represented a renewed commitment to, and a tangible investment in, Claire's founding principles.

In 2017, SFI USA (comprised of the three originating companies: ProThera, Inc., Klaire Labs, and Complementary Prescriptions™) christened a new >75,000 square foot, state-of-the-art manufacturing facility, including expanded scientific and support resources, advanced quality tools, and modernized processes.

Although SFI has acquired several exceptionally discriminating, independent nutraceutical manufacturers across the globe in recent years, shared values are the common thread. In the spirit of honoring the past as we embrace the future, all products manufactured at SFI USA in Reno, Nevada, are now unified under the Klaire Labs brand and guiding philosophy.



# Probiotics

## Ther-Biotic® Complete

### Comprehensive, enhanced-support probiotic formula

Ther-Biotic Complete is a proven, broad-spectrum, hypoallergenic blend of 12 probiotic species in a base of inulin. Designed to supply synergistic and complementary species, each capsule provides 25 billion CFU, and each ¼ teaspoon (1 g) of the powder provides 100 billion CFU. To ensure maximum viability throughout the intestinal tract, Ther-Biotic Complete products are protected by our proprietary InTactic® technology.

- Enhanced probiotic support with colonizing and transient strains
- Clean and hypoallergenic for optimal results
- Trusted by millions of healthcare professionals and patients worldwide

*Hypoallergenic. Made with non-GMO ingredients. Vegan friendly.*

### Capsules

**SUGGESTED USE: Adults:** 1 capsule daily with food or as directed by a healthcare professional. **Children:** As directed by a healthcare professional.

#### Supplement Facts

Serving Size 1 Capsule

Amount Per Capsule		% Daily Value
Probiotic Blend (25 billion CFU) in a base of inulin (derived from chicory root)	280 mg	*
<i>Lactobacillus rhamnosus</i>	6.0 billion CFU	*
<i>Bifidobacterium bifidum</i>	5.0 billion CFU	*
<i>Lactobacillus acidophilus</i>	3.0 billion CFU	*
<i>Lactobacillus casei</i>	2.5 billion CFU	*
<i>Lactobacillus plantarum</i>	2.0 billion CFU	*
<i>Lactobacillus salivarius</i>	2.0 billion CFU	*
<i>Bifidobacterium longum</i>	1.0 billion CFU	*
<i>Streptococcus thermophilus</i>	1.0 billion CFU	*
<i>Lactobacillus bulgaricus</i>	1.0 billion CFU	*
<i>Lactobacillus paracasei</i>	0.5 billion CFU	*
<i>Bifidobacterium lactis</i>	0.5 billion CFU	*
<i>Bifidobacterium breve</i>	0.5 billion CFU	*

\*Daily Value not established.

Other ingredients: Vegetarian capsule (hydroxypropyl methylcellulose, water), InTactic® proprietary polysaccharide complex, and L-leucine.

**V775-06 60 vegetarian capsules**

**V775-12 120 vegetarian capsules**



### Powder

**SUGGESTED USE: Adults:** 1/4 teaspoon daily with food or as directed by a healthcare professional. **Children:** As directed by a healthcare professional.

#### Supplement Facts

Serving Size 1/4 Teaspoon (Approx. 1 gram) • Servings Per Container 60

Amount Per 1/4 Teaspoon		% Daily Value
Probiotic Blend (100 billion CFU) in a base of inulin (derived from chicory root) and InTactic® proprietary polysaccharide complex	1 g	*
<i>Lactobacillus rhamnosus</i>	24.0 billion CFU	*
<i>Bifidobacterium bifidum</i>	20.0 billion CFU	*
<i>Lactobacillus acidophilus</i>	12.0 billion CFU	*
<i>Lactobacillus casei</i>	10.0 billion CFU	*
<i>Lactobacillus plantarum</i>	8.0 billion CFU	*
<i>Lactobacillus salivarius</i>	8.0 billion CFU	*
<i>Bifidobacterium longum</i>	4.0 billion CFU	*
<i>Streptococcus thermophilus</i>	4.0 billion CFU	*
<i>Lactobacillus bulgaricus</i>	4.0 billion CFU	*
<i>Lactobacillus paracasei</i>	2.0 billion CFU	*
<i>Bifidobacterium lactis</i>	2.0 billion CFU	*
<i>Bifidobacterium breve</i>	2.0 billion CFU	*

\*Daily Value not established.

Other ingredients: None.

**K-TCP 2.25 oz. (64 grams) powder**

# Digestive Enzymes

## Vital-Zymes

### Multi-enzyme supplement for extensive digestive support†

Our bestselling, multi-enzyme formulation offers a comprehensive array of microbial-derived enzymes that work in concert to support healthy enzymatic activities including digestion, microbiota balance, and inflammation modulation.<sup>†</sup> The broad-spectrum combination of enzymes in Vital-Zymes supports the complete breakdown, absorption, and utilization of macronutrients from a wide spectrum of foods, including proteins and peptides, complex carbohydrates, disaccharides and sugars, lipids/fats, and vegetable fibers.<sup>†</sup> The proteases/peptidase complex with DPP-IV activity aids in the digestion of gluten and casein. As such, Vital-Zymes is an important dietary adjunct for individuals who seek to improve nutrient uptake and for those with occasional indigestion resulting in gas and bloating.<sup>†</sup>

Made with non-GMO ingredients.

### Capsules

**SUGGESTED USE:** 2 capsules at the beginning of each meal or as directed by a healthcare professional.

Supplement Facts		
Serving Size 2 Capsules		
Amount Per 2 Capsules	% Daily Value	
<b>Comprehensive Enzyme Blend</b>	<b>800 mg</b>	<b>*</b>
With the following enzyme activity:		
<b>Carbohydrate Specific Enzymes</b>		
Amylase	1,830 BAUΔ	
Alpha-Amylase	100 DUΔ	
Glucoamylase (with isomaltase side chain activity)	30 AGUΔ	
<b>Sugar Specific Enzymes</b>		
Lactase	1,500 ALUΔ	
Sucrase (invertase)	400 SUΔ	
Maltase (diastase)	200 DP*Δ	
Pullulanase (debranching enzyme with isomaltase side chain activity)	25 UΔ	
<b>Vegetable/Plant Fiber Specific Enzymes</b>		
Cellulase	500 CUΔ	
Hemicellulase/Pectinase/Phytase Complex	200 HSUΔ	
Phytase	10 PUΔ	
Beta-Glucanase	20 BGUΔ	
Alpha-Galactosidase	100 AGSUΔ	
Galactomannase	200 HCUΔ	
<b>Protein and Peptide Specific Enzymes</b>		
Acid Protease	50 SAPUΔ	
Alkaline Protease	50 PCΔ	
Proteases/Peptidase Complex with endopeptidase, exopeptidase, and DPP-IV activity	40,000 HUTΔ	
<b>Fat Specific Enzyme</b>		
Lipase	1,500 FIPUΔ	
<b>Other Enzymes</b>		
Lysozyme (from egg white)	100,000 SHUΔ	
Serratia peptidase (enteric-coated) <sup>†</sup>	2,500 SPUΔ	

\*Daily Value not established.

Other ingredients: Vegetarian capsule (hydroxypropyl methylcellulose, water), coconut oil powder, and cellulose.

ΔUnits are those used in edition nine (IX) of the Food Chemicals Codex (FCC).

<sup>†</sup>Peptizyme SP<sup>®</sup>, a registered trademark of Specialty Enzymes.

### K-VZM 120 vegetarian capsules



### Chewable Tablets

**SUGGESTED USE:** 2 tablets at the beginning of each meal or as directed by a healthcare professional.

Supplement Facts		
Serving Size 2 Tablets		
Amount Per 2 Tablets	% Daily Value	
<b>Comprehensive Enzyme Blend</b>	<b>320 mg</b>	<b>*</b>
With the following enzyme activity:		
<b>Carbohydrate Specific Enzymes</b>		
Amylase	732 BAUΔ	
Alpha-Amylase	40 DUΔ	
Glucoamylase (with isomaltase side chain activity)	12 AGUΔ	
<b>Sugar Specific Enzymes</b>		
Lactase	600 ALUΔ	
Sucrase (invertase)	160 SUΔ	
Maltase (diastase)	80 DP*Δ	
Pullulanase (debranching enzyme with isomaltase side chain activity)	10 UΔ	
<b>Vegetable/Plant Fiber Specific Enzymes</b>		
Cellulase	200 CUΔ	
Hemicellulase/Pectinase/Phytase Complex	80 HSUΔ	
Phytase	4 PUΔ	
Beta-Glucanase	8 BGUΔ <sup>†</sup>	
Alpha-Galactosidase	40 AGSUΔ	
Galactomannase	80 HCUΔ	
<b>Protein and Peptide Specific Enzymes</b>		
Acid Protease	20 SAPUΔ	
Alkaline Protease	20 PCΔ	
Protease/Peptidase Complex with endopeptidase, exopeptidase, and DPP-IV activity	16,000 HUTΔ	
<b>Fat Specific Enzyme</b>		
Lipase	600 FIPΔ	
<b>Other Enzymes</b>		
Serratia peptidase (enteric-coated) <sup>†</sup>	1,000 SPU	

\*Daily Value not established.

Other ingredients: Stearic acid, silicon dioxide, and natural cherry flavor.

ΔUnits are those used in edition nine (IX) of the Food Chemicals Codex (FCC).

<sup>†</sup>Peptizyme SP<sup>®</sup>, a registered trademark of Specialty Enzymes.

### K-VCH 180 chewable tablets

<sup>†</sup>These statements have not been evaluated by the Food and Drug Administration. These products are not intended to diagnose, treat, cure, or prevent any disease.

# Magnesium

## Magnesium Glycinate Complex

### Well-tolerated and easily absorbed

Magnesium bisglycinate chelate is a highly bioavailable form of elemental magnesium that is well-tolerated even by the most sensitive individuals. The fourth most abundant mineral in the human body, magnesium is an essential nutrient that acts as a cofactor in many metabolic processes. Supplementation has been shown to have a wide range of clinical applications, including supporting healthy muscular and neurological function, cardiovascular and digestive function, and healthy sleep and relaxation.<sup>†</sup> Sufficient magnesium intake is also important in the healthy metabolism of vitamin D.

*Hypoallergenic. Made with non-GMO ingredients. Vegan friendly.*



### Capsules

**SUGGESTED USE:** 1 capsule, 1 to 3 times daily or as directed by a healthcare professional.

### Supplement Facts

Serving Size 1 Capsule

Amount Per Capsule	% Daily Value	
Magnesium (as TRAACS® magnesium bisglycinate chelate, magnesium oxide <sup>†</sup> )	100 mg	24%

Other ingredients: Vegetarian capsule (hydroxypropyl methylcellulose, water), magnesium stearate, and silicon dioxide.

<sup>†</sup>Albion® Laboratories and TRAACS(R) are registered trademarks of Albion(R) Laboratories, Inc.

### V827-10 100 vegetarian capsules

<sup>†</sup> These statements have not been evaluated by the Food and Drug Administration. These products are not intended to diagnose, treat, cure, or prevent any disease.



# Omega-3 Fatty Acids

## Eicosamax® 1000

### Pure, potent & eco-friendly

Eicosamax 1000 is a convenient once-daily omega-3 fatty acid supplement offering 1,000 mg EPA/DHA in the natural, triglyceride form per softgel. To verify the product's freedom from contaminants, each batch of Eicosamax 1000 is analyzed for over 250 potential environmental toxins, heavy metals, and impurities by an accredited, third-party laboratory. In addition to removing potentially harmful toxins, and impurities that can contribute to a fishy taste, Eicosamax 1000 is molecularly distilled, a processing technique that consistently delivers oils of exceptional quality and freshness. Natural mixed tocopherols are added as antioxidants, and natural lemon flavor is added to provide a clean, refreshing taste.

Eicosamax 1000 is a premium quality fish oil product at an affordable price.

*Made with non-GMO ingredients.*



### Softgels

**SUGGESTED USE:** 1 softgel, 1 to 2 times daily with food or as directed by a healthcare professional. Caution: If you are pregnant, nursing, have a medical condition, or taking prescription drugs, consult your healthcare professional before using this product. Keep out of reach of children.

### Supplement Facts

Serving Size 1 Softgel

Amount Per Softgel	% Daily Value	
Calories	15	
Calories from Fat	10	
Total Fat	1.5 g	2%**
Saturated Fat	<0.5 g	<1%**
Polyunsaturated Fat	1 g	*
Cholesterol	5 mg	2%
Marine Fish Oil Concentrate (highly refined)	1,250 mg	*
Total Omega-3 Fatty Acids (as triglycerides)	1,050 mg	*
EPA (eicosapentaenoic acid as triglyceride)	600 mg	*
DHA (docosahexaenoic acid as triglyceride)	400 mg	*

\*\*Percent Daily Values are based on a 2,000 calorie diet.

\*Daily Value not established.

Other ingredients: Gelatin, water, glycerin, natural lemon flavor, and natural mixed tocopherols.

Contains: Fish (highly refined oil from anchovy, sardine, and mackarel).

### EMXXS 60 softgels

†These statements have not been evaluated by the Food and Drug Administration. These products are not intended to diagnose, treat, cure, or prevent any disease.

## Eicosamax® TG Liquid

### Great tasting fresh lemon-flavor oil

Eicosamax TG Liquid provides concentrated triglyceride-form omega-3 fatty acids, which play a role in supporting overall health, including a balanced inflammatory response, assisting in triglyceride metabolism, and supporting healthy heart, joint, skin, brain, and nerve function.<sup>†</sup> Each batch of Eicosamax TG Liquid is responsibly and sustainably harvested and tested for over 250 potential environmental toxins by an accredited, third-party laboratory to assure exceptional purity. Anaerobic bottling, natural lemon flavoring, as well as added mixed tocopherol antioxidants protect against oxidation, maintain product freshness, and ensure a fresh, non-fishy taste.

Eicosamax TG Liquid supplies 2,325 mg of EPA/DHA per teaspoon.

*Made with non-GMO ingredients.*

#### Liquid

**SUGGESTED USE:** 1 teaspoon daily with food or as directed by a healthcare professional.



### Supplement Facts

Serving Size 1 Teaspoon (Approx. 5 mL) • Servings Per Container 30

Amount Per Teaspoon	% Daily Value	
Calories	40	
Calories from Fat	40	
Total Fat	4.5 g	6%**
Polyunsaturated Fat	3 g	*
Cholesterol	20 mg	7%
Marine Fish Oil Concentrate (highly refined)	4,600 mg	*
Total Omega-3 Fatty Acid (as triglycerides)	2,800 mg	*
EPA (eicosapentaenoic acid as triglyceride)	1,400 mg	*
DHA (docosahexaenoic acid as triglyceride)	925 mg	*

\*Daily Value not established.

\*\*Percent Daily Values are based on a 2,000 calorie diet. Daily Value not established.

Other ingredients: Natural lemon flavor, natural mixed tocopherols, rosemary extract, and ascorbyl palmitate.

Contains: Fish (highly refined oil from anchovy, sardine, and mackerel).

### EMLTG 5 fluid oz. (150 mL)

<sup>†</sup> These statements have not been evaluated by the Food and Drug Administration. These products are not intended to diagnose, treat, cure, or prevent any disease.



## Eicosamax® TG

### Maintenance dose omega-3 fatty acid

Eicosamax TG offers essential fatty acids in concentrated triglyceride-form omega-3 EPA and DHA. Manufactured with the same exceptional quality as the rest of the Klaire Eicosamax line, this product offers 600 mg of EPA/DHA per softgel. Eicosamax TG is a great option for patients wanting a quality product at a great value.

*Made with non-GMO ingredients.*

#### Softgels

**SUGGESTED USE:** 1 softgel, 1 to 3 times daily with food or as directed by a healthcare professional.

Supplement Facts		
Serving Size 1 Softgel		
Amount Per Softgel		% Daily Value
Calories	10	
Calories from Fat	10	1% <sup>**</sup>
Total Fat	1 g	
Saturated Fat	<0.5 g	<1% <sup>**</sup>
Polyunsaturated Fat	1 g	*
Marine Fish Oil Concentrate (highly refined)	1,100 mg	*
Total Omega-3 Fatty Acid (as triglycerides)	650 mg	*
EPA (eicosapentaenoic acid as triglyceride)	360 mg	*
DHA (docosahexaenoic acid as triglyceride)	240 mg	*

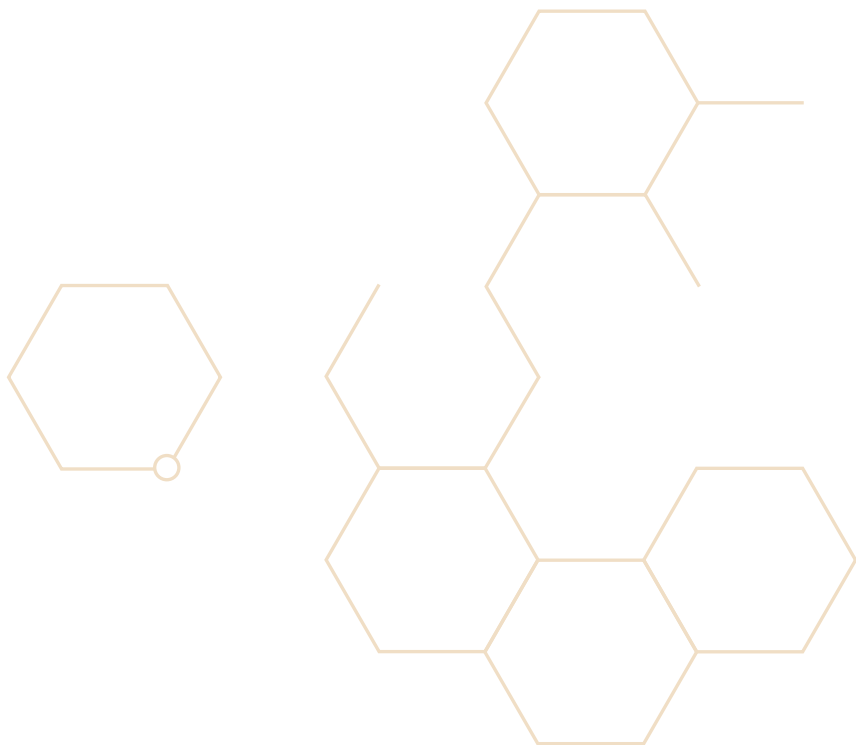
\*Daily Value not established.  
 \*\*Percent Daily Values are based on a 2,000 calorie diet.

Other ingredients: Gelatin, water, glycerin, natural lemon flavor, and natural mixed tocopherols.

Contains: Fish (highly refined oil from anchovy, sardine, and mackerel).

#### EMXTG 60 softgels

#### EMXTG120 120 softgels



<sup>†</sup>These statements have not been evaluated by the Food and Drug Administration. These products are not intended to diagnose, treat, cure, or prevent any disease.

# Curcumin

## Curcuthera™

### Highly bioavailable curcumin extract

Curcuthera is a hypoallergenic, bioavailable curcumin supplement containing Meriva®. An extensively studied curcumin extract on the market, Meriva® has 18 times higher bioavailability of curcumin and 29 times higher relative absorption of total curcuminoids vs. standardized curcumin. Curcuthera's patented Phytosome® delivery system allows for enhanced absorption and utilization of curcumin to support a balanced and healthy inflammatory response and provides powerful antioxidant activity.<sup>†</sup>

**SUGGESTED USE:** 1 or 2 capsules twice daily with food or as directed by a healthcare professional.

Supplement Facts	
Serving Size 1 Capsule	
Amount Per Capsule	
Turmeric Phytosome† ( <i>Curcuma longa</i> extract) (rhizome), with Sunflower Phosphatidylcholine Complex	500 mg*
*Daily Value not established.	

Other ingredients: Microcrystalline cellulose, vegetarian capsule (hydroxypropyl methylcellulose, water), and ascorbyl palmitate.

†Meriva® bioavailable curcumin. Meriva® is a registered trademark of Indena S.p.A., Italy.



## CURC 60 capsules

<sup>†</sup> These statements have not been evaluated by the Food and Drug Administration. These products are not intended to diagnose, treat, cure, or prevent any disease.

# Vitamin D

## Vitamin D<sub>3</sub> (5,000 IU)

High-potency D3 support for musculoskeletal, cardiovascular, and immune health<sup>†</sup>

Given that inadequate vitamin D intake is so commonplace, nutritional supplementation plays an important health role for many patients. Beyond calcium absorption and bone health, vitamin D3 supports many important physiologic roles, including inflammation modulation, neuromuscular function, immune cell signaling, cognitive performance, healthy glucose levels within the normal range, as well as cell growth and differentiation.<sup>†</sup> This vitamin D capsule formula is hypoallergenic and well tolerated by even your most sensitive patient.

*Hypoallergenic. Made with non-GMO ingredients.*

### 5,000 IU

**SUGGESTED USE:** 1 capsule daily with food or as directed by a healthcare professional.

Supplement Facts		
Serving Size 1 Capsule		
Amount Per Capsule		% Daily Value
Vitamin D <sub>3</sub> (as cholecalciferol)	125 mcg	625%

Other ingredients: Microcrystalline cellulose, vegetarian capsule (hydroxypropyl methylcellulose, water), cellulose, L-leucine, and silicon dioxide.

## VTDS 100 capsules

## Vitamin D Plus K

Combination to support healthy calcium metabolism

Vitamin D and K are structurally similar fat-soluble vitamins. Synergistically, they support healthy calcium metabolism and bone mineralization throughout the body as well as a healthy calcium balance in vascular tissues.<sup>†</sup> Recent studies have shown that vitamins D and K support healthy functioning of both innate and adaptive immune response.<sup>†</sup> Klaire's Vitamin D Plus K is a combination of the most bioavailable forms of 5,000 IU of Vitamin D3 (cholecalciferol) and 100 mcg Vitamin K<sub>2</sub> (menaquinone-7, MK-7).

*Hypoallergenic. Made with non-GMO ingredients.*

**SUGGESTED USE:** Adults: 1 capsule daily with food or as directed by a healthcare professional. **Caution:** Not intended for use by infants or children unless under the guidance of a physician. If you are pregnant, nursing, have a medical condition (including hypercalcemia), or taking prescription drugs (including blood thinning medications), consult your physician before using this product. It is recommended that individuals taking 100 mcg (4,000 IU) or more vitamin D per day have their vitamin D blood levels monitored. Do not exceed recommended dose. Keep out of reach of children.

Supplement Facts		
Serving Size 1 Capsule		
Amount Per Capsule		% Daily Value
Vitamin D <sub>3</sub> (as cholecalciferol)	125 mcg (5000 IU)	625%
Vitamin K <sub>2</sub> (as menaquinone-7) (derived from sweet acacia tree) ( <i>Vachellia farnesiana</i> ) (flower extract)	100 mcg	83%

Other ingredients: Microcrystalline cellulose, vegetarian capsule (hydroxypropyl methylcellulose, water), ascorbyl palmitate, and silicon dioxide.

## VDK 60 vegetarian capsules



<sup>†</sup>These statements have not been evaluated by the Food and Drug Administration. These products are not intended to diagnose, treat, cure, or prevent any disease.

# Multivitamins

## MultiThera® 1 Capsule Formula

### Comprehensive micronutrient essentials

MultiThera is a complete multivitamin and mineral supplement containing over 22 essential nutrients in the clinically meaningful amounts and ratios. MultiThera 1 was developed based on scientific evidence, clinical research, and bioavailability, with specific attention to safety, efficacy, and clean and hypoallergenic label claims. The 1:1 calcium to magnesium ratio, high amounts of vitamins E, C, D<sub>3</sub>, and B-complex, bioactive forms of folate and vitamin B12, extra pantothenic acid for adrenal support,<sup>1</sup> and a full complement of trace elements distinguish this formula from ordinary multivitamins. Copper is included to support SOD antioxidant enzyme activity and to maintain a healthy balance with zinc. A clear, easy-to-swallow, water-soluble cellulose coating protects ingredient stability, and the product is tested to industry standards for meeting finished product specifications, including capsule disintegration.

This iron-free formula option is suitable for most adults.



**SUGGESTED USE:** Adults: 6 capsules with food or as directed by a healthcare professional. Children 4 to 14 years: Take up to 3 capsules daily. Children less than 4 years of age: As directed by a healthcare professional.

Supplement Facts		
Serving Size 6 Capsules		
Amount Per 6 Capsules	% Daily Value	
Vitamin A (64% (1,500 mcg RAE) as natural carotenes (beta-crotenes, alpha-carotene and beta-cryptoxanthin) from <i>D. salina</i> and 36% (750 mcg RAE) as vitamin A palmitate)	2,250 mcg RAE	250%
Vitamin C (as ascorbic acid)	750 mg	833%
Vitamin D <sub>3</sub> (as cholecalciferol)	25 mcg	125%
Vitamin E (as RRR-alpha tocopheryl acid succinate, RRR-alpha-tocopherol) <sup>††</sup>	268 mg	1,787%
Thiamin (as thiamin HCl)	50 mg	4,167%
Riboflavin	25 mg	1,923%
Niacin (75% as niacinamide, 25% as niacin)	100 mg NE	625%
Vitamin B <sub>6</sub> (as pyridoxine HCl)	25 mg	1,471%
Folate (as Metafolin <sup>®</sup> L-5-methyltetrahydrofolate)	1,360 mcg DFE (800 mcg)	340%
Vitamin B <sub>12</sub> (as methylcobalamin)	200 mcg	8,333%
Biotin (D-biotin)	300 mcg	1,000%
Pantothenic Acid (as calcium D-pantothenate)	150 mg	3,000%
Choline (as choline bitartrate)	100 mg	18%
Calcium (91% as calcium citrate-malate complex and 9% as calcium D-pantothenate)	192 mg	15%
Iodine (from kelp)	150 mcg	100%
Amount Per 6 Capsules	% Daily Value	
Magnesium (75% as dimagnesium malate and 25% as TRAACS <sup>®</sup> magnesium bisglycinate chelate <sup>††</sup> )	250 mg	60%
Zinc (as zinc arginate chelate <sup>††</sup> )	15 mg	136%
Selenium (as L-selenomethionine)	200 mcg	364%
Copper (as copper bisglycinate chelate <sup>††</sup> )	2 mg	222%
Manganese (as manganese bisglycinate chelate <sup>††</sup> )	2 mg	87%
Chromium (as chromium nicotinate glycinate chelate <sup>††</sup> )	200 mcg	571%
Molybdenum (as molybdenum glycinate chelate <sup>††</sup> )	150 mcg	333%
Boron (as boron aspartate-citrate)	2 mg	*
Vanadium (as bisglycinate oxovanadium)	100 mcg	*
Inositol	25 mg	*
para-Aminobenzoic Acid	50 mg	*
Citrus Bioflavonoids Complex (85 mg as citrus bioflavonoid extract ( <i>Citrus aurantium</i> ) (fruit/peel) (standardized to 50% hesperidin bioflavonoids) and 15 mg as hesperidin methyl chalcone (derived from <i>Citrus aurantium</i> extract) (fruit))	100 mg	*
Natural Mixed Tocopherols (RRR-beta, RRR-delta, RRR-gamma) <sup>††</sup>	8 mg	*
Natural Mixed Carotenoids (lutein and zeaxanthin from <i>D. salina</i> )	30 mcg	*

\*Daily Value not established.

Other ingredients: Vegetarian capsule (hydroxypropyl methylcellulose, water), silicon dioxide, L-leucine, and natural citrus flavor.

<sup>†</sup>Metafolin<sup>®</sup> is a registered trademark of Merck KGaA, Darmstadt, Germany.  
<sup>††</sup>Albion<sup>®</sup> Laboratories and TRAACS<sup>®</sup> are registered trademarks of Albion<sup>®</sup> Laboratories, Inc.  
<sup>†††</sup>Vitamin E derived from highly refined soy oil that has soy protein removed. Formulated to be hypoallergenic.

## MT1C 180 capsules

<sup>†</sup> These statements have not been evaluated by the Food and Drug Administration. These products are not intended to diagnose, treat, cure, or prevent any disease.

## VitaPrime® Capsule Formula

### Two-per-day multi to support sufficient nutritional intake

This moderate potency multiple vitamin/mineral/trace element supplement is provided in just two capsules, yet provides significant amounts of essential nutrients in bioavailable forms. Compared to over-the-counter multivitamin products, VitaPrime offers enhanced antioxidant protection, broader trace element nutrition, and augmented B vitamin support.<sup>†</sup> This core foundation of essential nutrients provides an extra measure of nutritional support that can be recommended to accompany a healthy diet.

### Capsules

**SUGGESTED USE:** Adults: 2 capsules daily with food. Children 4 to 14: Take 1 capsule daily with food or as directed by healthcare professional. Children less than 4 years of age: As directed by healthcare professional.



### Supplement Facts

Serving Size 2 Capsules

Amount Per 2 Capsules	% Daily Value	
Vitamin A (58% (1,050 mcg RAE) as natural carotenes (beta-carotene, alpha-carotene, and beta-cryptoxanthin) from <i>D. salina</i> and 42% (750 mcg RAE) as vitamin A palmitate)	1,800 mcg RAE	200%
Vitamin C (as L-ascorbic acid)	180 mg	200%
Vitamin D <sub>3</sub> (as cholecalciferol)	15 mcg	75%
Vitamin E (as 83% RRR-alpha-tocopheryl acid succinate, 17% as RRR-alpha-tocopherol) <sup>††</sup>	100 mg	667%
Vitamin K <sub>1</sub> (as phytonadione)	60 mcg	50%
Thiamin (as thiamin HCl)	25 mg	2,083%
Riboflavin (as riboflavin)	15 mg	1,154%
Niacin (67% as niacinamide and 33% as niacin)	60 mg NE	375%
Vitamin B <sub>6</sub> (as pyridoxine HCl)	15 mg	882%
Folate (as Metafolin® L-5-methyltetrahydrofolate)	680 mcg DFE (400 mcg)	170%
Vitamin B <sub>12</sub> (as methylcobalamin)	50 mcg	2,083%
Biotin (D-biotin)	300 mcg	1,000%
Pantothenic acid (as calcium D-pantothenate)	50 mg	1,000%
Choline (as choline bitartrate)	75 mg	14%
Calcium (90% as calcium citrate-malate and 10% as calcium D-pantothenate)	45 mg	3%
Iodine (from kelp)	150 mcg	100%
Magnesium (75% as dimagnesium malate and 25% as TRAACS® magnesium bisglycinate chelate <sup>††</sup> )	40 mg	10%
Zinc (as TRAACS® zinc bisglycinate chelate <sup>††</sup> )	15 mg	136%
Selenium (as TRAACS® selenium amino acid complex)	200 mcg	364%
Copper (as TRAACS® copper gluconate)	2 mg	222%
Manganese (as TRAACS® manganese bisglycinate chelate <sup>††</sup> )	2 mg	87%
Chromium (as TRAACS® chromium nicotinate glycinate chelate <sup>††</sup> )	150 mcg	429%
Molybdenum (as TRAACS® molybdenum glycinate chelate <sup>††</sup> )	100 mcg	222%
Boron (as boron aspartate-citrate)	2 mg	*
Vanadium (as bisglycinato oxovanadium)	50 mcg	*
Inositol	25 mg	*
Citrus Bioflavonoids (50 mg as citrus bioflavonoid complex (50% bioflavonoids) and 15 mg as hesperidin methylchalcone)	65 mg	*
Natural Mixed Tocopherols (RRR-beta, RRR-delta, RRR-gamma) <sup>††</sup>	4 mg	*
Natural Mixed Carotenoids (lutein and zeaxanthin from <i>D. salina</i> )	20 mcg	*

\*Daily Value not established.

<sup>††</sup>Vitamin E derived from highly refined soy oil that has soy protein removed.

Other ingredients: Vegetarian capsule (hydroxypropyl methylcellulose, water), stearic acid, cellulose, silicon dioxide, and natural citrus flavor.

<sup>†</sup>Metafolin® is a registered trademark of Merck KGaA, Darmstadt, Germany.

<sup>††</sup>Albion® Laboratories and TRAACS® are registered trademarks of Albion® Laboratories, Inc.



### VTPC 60 capsules

<sup>†</sup>These statements have not been evaluated by the Food and Drug Administration. These products are not intended to diagnose, treat, cure, or prevent any disease.

## VitaSpectrum® Powder – Tropical Flavor

### Powdered multiple vitamin/mineral supplement

This comprehensive multiple vitamin/mineral supplement contains 23 highly bioavailable essential nutrients in a great tasting powder format. Besides the alternative delivery method being a great alternative for your patients, the amounts and ratios of the nutrients are designed to address nutritional imbalances commonly observed in individuals on the spectrum.<sup>†</sup> Gastrointestinal function, including transit time and absorption issues, affects a significant percentage of individuals on the spectrum and contributes to altered nutritional requirements. VitaSpectrum also is a great addition to individuals on a food elimination diet or those with a tendency to be highly selective eaters. VitaSpectrum addresses these situations by supplying balanced amounts of vitamins, minerals, and trace elements in forms that are typically well tolerated. Bioactive forms of folate, B12, and B6 are included along with naturally sourced carotenes, vitamin E, and D for optimal nutrient absorption and utilization. VitaSpectrum is free of common allergens, starch, maltodextrin, stearates, artificial sweeteners, colors, flavors, and preservatives. The pleasant, naturally flavored powder formula dissolve easily in liquids or can be mixed in foods. A convenient measuring scoop is provided for accurate measurement.

*Hypoallergenic. Gluten-Free/Casein-Free (GFCF).*



**SUGGESTED USE:** Adults or Children 4 or more years of age: 1 scoop daily with food.  
Children under 4 years of age: As directed by a healthcare professional.

### Supplement Facts

Serving Size 1 Scoop (Approx. 1 1/2 teaspoon or 5.5 grams) • Servings Per Container 30

Amount Per Scoop	% Daily Value	
Vitamin A (64% (1,050 mcg RAE) as natural carotenes (beta-carotene, alpha-carotene and beta-cryptoxanthin) from <i>D. salina</i> and 36% (600 mcg RAE) as vitamin A palmitate)	1,650 mcg RAE	183%
Vitamin C (as L-ascorbic acid)	500 mg	556%
Vitamin D <sub>3</sub> (as cholecalciferol)	25 mcg	125%
Vitamin E (as RRR-alpha-tocopheryl acid succinate, RRR-alpha-tocopherol) <sup>††</sup>	97 mg	647%
Vitamin K <sub>1</sub> (as phytonadione)	60 mcg	50%
Thiamin (as thiamin mononitrate)	25 mg	2,083%
Riboflavin	15 mg	1,154%
Niacin (67% as niacinamide, 33% as niacin)	60 mg	375%
Vitamin B <sub>6</sub> (67% as pyridoxine HCl, 33% as pyridoxal-5'-phosphate)	15 mg	882%
Folate (as Metafolin <sup>†</sup> L-5-methyltetrahydrofolate)	680 mcg DFE	170%
Vitamin B <sub>12</sub> (as methylcobalamin)	50 mcg	2,083%
Biotin (as D-biotin)	300 mcg	1,000%
Pantothenic Acid (as calcium D-pantothenate)	50 mg	1,000%
Choline (as choline bitartrate)	75 mg	14%
Calcium (as calcium citrate-malate complex)	300 mg	23%
Iodine (as potassium iodide)	150 mcg	100%
Magnesium (as TRAACS <sup>®</sup> magnesium bisglycinate chelate, magnesium oxide <sup>††</sup> )	300 mg	71%
Zinc (as zinc bisglycinate chelate <sup>††</sup> )	15 mg	136%
Selenium (as selenium amino acid complex)	100 mcg	182%
Manganese (as manganese bisglycinate chelate <sup>††</sup> )	2 mg	87%
Chromium (as chromium nicotinate glycinate chelate <sup>††</sup> )	150 mcg	429%
Molybdenum (as molybdenum glycinate chelate <sup>††</sup> )	100 mcg	222%
Potassium (as potassium chloride)	100 mg	2%
Boron (as boron glycinate complex <sup>††</sup> )	2 mg	*
Vanadium (as bisglycinate oxovanadium)	50 mcg	*
Inositol	25 mg	*
Citrus Bioflavonoids Complex (85 mg as citrus bioflavonoid extract ( <i>Citrus aurantium</i> ) (fruit/peel) (standardized to 50% hesperidin bioflavonoids) and 15 mg as hesperidin methyl chalcone (derived from <i>Citrus aurantium</i> extract) (fruit))	100 mg	*
Natural Mixed Tocopherols (RRR-beta, RRR-delta, RRR-gamma) <sup>††</sup>	4 mg	*
Natural Mixed Carotenoids (lutein and zeaxanthin from <i>D. salina</i> )	20 mcg	*

\*Daily Value not established.

Other ingredients: Tapioca starch, monk fruit extract (*Siraitia grosvenorii*), silica, and tropical flavor.

<sup>†</sup>Metafolin<sup>®</sup> is a registered trademark of Merck KGaA, Darmstadt, Germany.

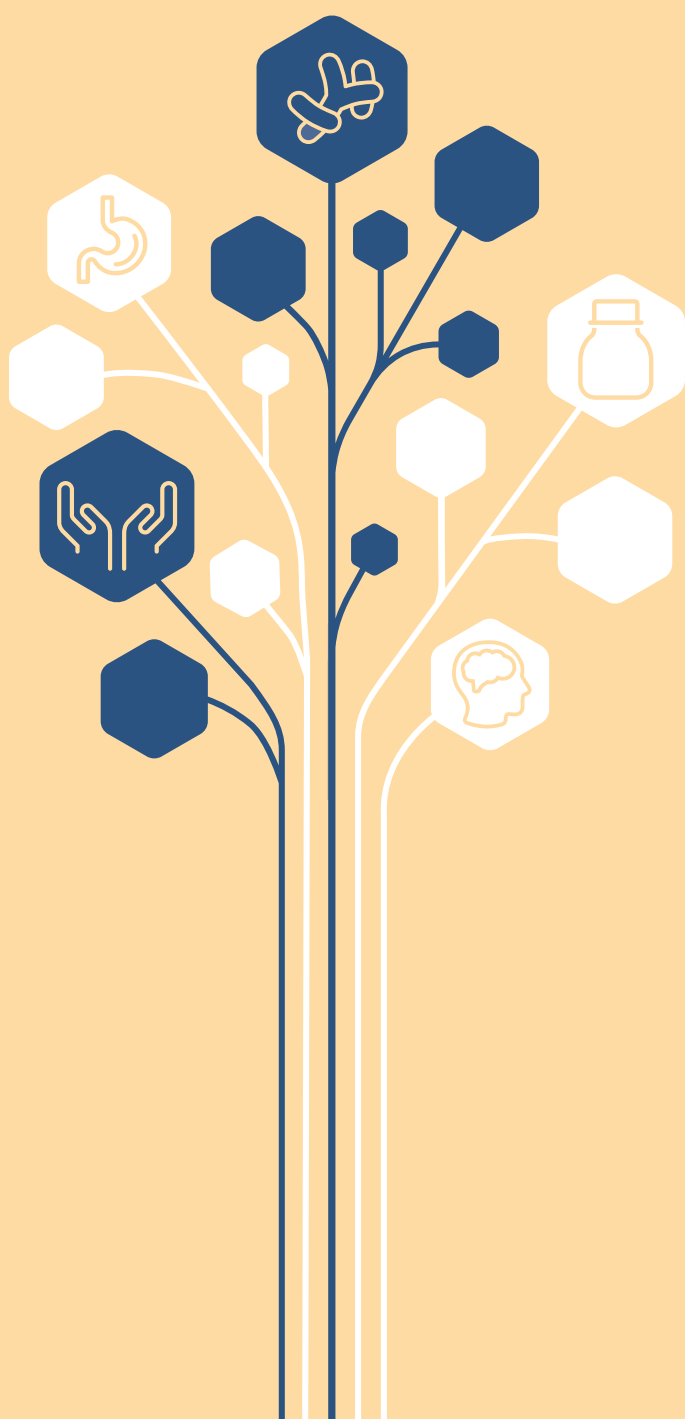
<sup>††</sup>Albion<sup>®</sup> Laboratories and TRAACS<sup>®</sup> are registered trademarks of Albion<sup>®</sup> Laboratories, Inc.



## K-VTS-T 5.8 oz. (165 grams) tropical flavored powder

<sup>†</sup> These statements have not been evaluated by the Food and Drug Administration. These products are not intended to diagnose, treat, cure, or prevent any disease.

PURITY | POTENCY | PERFORMANCE



**Contact us and order today**

**klaire.com | 888 488 2488**

Available through licensed healthcare professionals.

†These statements have not been evaluated by the Food and Drug Administration.  
These products are not intended to diagnose, treat, cure, or prevent any disease.





## PRODUCT PROSPECTUS

---

### SFI USA

795 Trademark Drive | Reno, NV 89521 USA  
P 775 850 8800 F 775 850 8810 TF 888 488 2488  
**klaire.com**

© Copyright 2019 SFI USA | Reno, NV | All rights reserved.



PEPROS190430.04